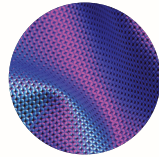


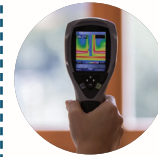
Activity 1: Devices to be cut and pasted on to work sheet 1



Ergonomic Harnessing:
Use for devices to be attached to a human.



Flame Resistant Fabric:
Fabric that reflects and limits the absorption of heat to a very high temperature. Developed for NASA.



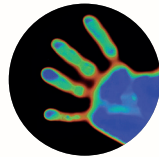
Thermal Imaging Camera:
A camera that that uses the Infra-Red Spectrum to pick up temperature and display as a visual form.



Augmented reality glasses:
Glasses that linked to the Internet with a small camera. It also allowed the user to operate a external device using their eyes to control a user interface.



Smart Phone:
Communication Device



Thermocolour pigment:
A colourant that can be added to any material that reacts at different temperatures.



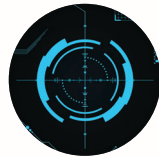
External USB Battery:
Can store energy to power devices.



GPS and Mapping software:
to find the location of a specified area and can plot to any map or plan within a distance on 0.5 Meters.



Helmet Torch:
Emit high beam of light the help the field of vision



HUD (Head up Display):
Used in transport and aviation to allow operator to still view and have extra useful information.



Main Control Unit:
This could Send/Receive information from a central point.



Environmental Monitor:
Monitors data such as Methane, Co2, Toxins, and Pollution etc.



Helmet CAM:
To record or take images to send to a remote location



Breathing Apparatus (BA):
Allows a firefighter to have a personal air supply for a giving time.

