

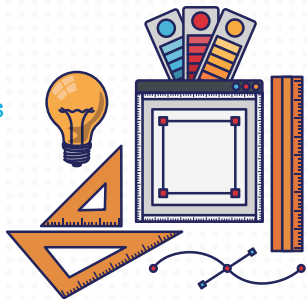


FORGOTTEN ROOM

Use your STEM skills to transform a room in your home or space in your garden.

HOW?

- Measure the space writing all the dimensions in cm
- Draw a plan of the room to scale -1:10cm
- Redesign the space using the the correct drawing rules
- Think about scale of items and materials
- Present your design either a model out of household items or you could use technology to present your design
- Share your photos/pictures on Twitter & Instagram using the hashtag #STEMconstruct



SCALE

To draw to a 1:10cm scale, means for every 10cm measured, you draw 1cm so if one wall in your room measures 100cm you would draw 10cm.

DRAWING RULES

Below are some of the drawing rules to use if you are going to draw your space in plan view.



SOLID LINE- WALLS



DASHED LINE- WALLS REMOVED



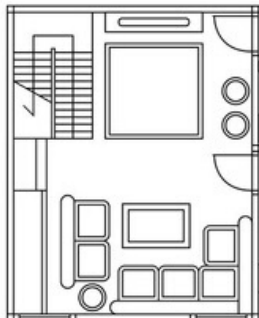
DIMENSION LINE - ALL MEASUREMENTS



DOOR OPENING - FOR ALL DOORS

THINGS TO THINK ABOUT...

- Materials - what are the properties of the materials you are going to use such as concrete because it's strong or fabric because it is comfy and soft to touch.
- Scale - why are things so tall or so wide? Such a table - why is it so high?
- Presentation - What is the best way to display your design? In 3D or 2D? Could you do a photo collage?



SKILLS



MEASURING AND SCALE



CREATIVITY AND PROBLEM SOLVING