



# Animals that hibernate



Animal	Food	Habitat	Hibernation Time
Hedgehog			
Tortoise			
Snail			
Bat	They eat insects, moths, and beetles.	disused buildings, old trees and caves.	Usually hibernate from November to April.

Card activity about animals that hibernate over the winter







# What is hibernation?

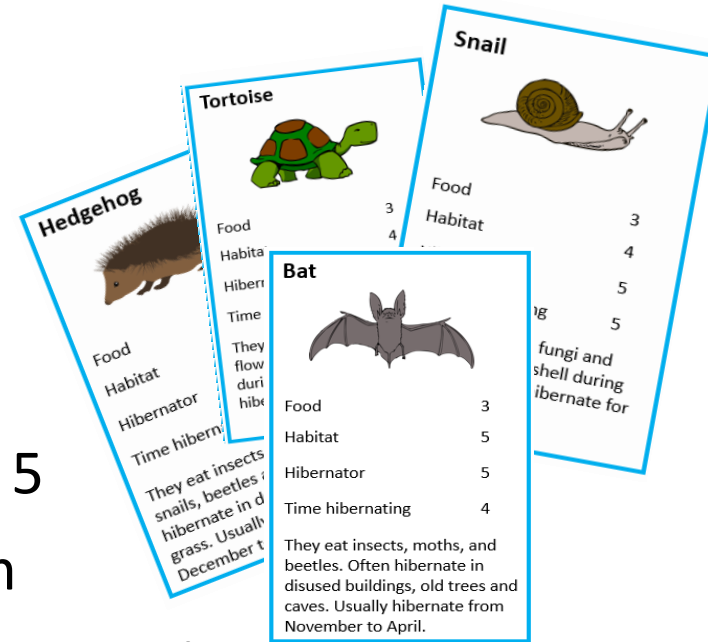
- Hibernation is the way animals survive the winter cold
- They collect food in the warm months because it is hard to find food in winter
- They fall into a deep sleep in a safe place



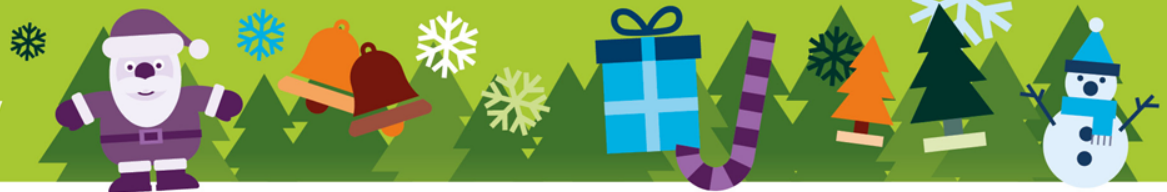


# Hibernation - card activity

- **Aim of the activity:** win all the cards!
- Deal out the cards
- Hold the cards to see the top card only
- The dealer reads out an item e.g. habitat 5
- The other players read out the same item
- The player with higher value wins the other cards
- The winning player from that hand then reads out an item on their next card – and so on.
- **The player with all the cards at the end wins the game!**







**Bat**



Size	2
Amount of food eaten	2
Time hibernating	4
<ul style="list-style-type: none"> <li>eat insects, moths, and beetles</li> <li>hibernate in disused buildings, old trees and caves</li> <li>hibernate from November to April</li> </ul>	

**Badger**



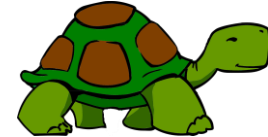
Size	3
Amount of food eaten	4
Time hibernating	0
<ul style="list-style-type: none"> <li>eat insects, small animals, worms, fungi and fruit</li> <li>live in woodland and farmland</li> <li>do not hibernate</li> </ul>	

**Snail**



Size	0
Amount of food eaten	1
Time hibernating	5
<ul style="list-style-type: none"> <li>eat leaves, fungi and fruit</li> <li>lives in its shell during winter</li> <li>can hibernate for up to three years</li> </ul>	

**Tortoise**



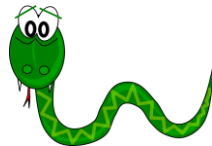
Size	2
Amount of food eaten	2
Time hibernating	2
<ul style="list-style-type: none"> <li>eat leaves, grass and flowers</li> <li>lives in its shell during winter</li> <li>hibernates for up to ten weeks</li> </ul>	

**Hedgehog**



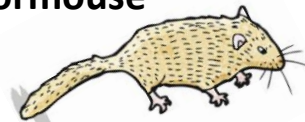
Size	3
Amount of food eaten	3
Time hibernating	4
<ul style="list-style-type: none"> <li>eat insects, slugs, beetles snails and frogs</li> <li>hibernate in dry leaves and grass</li> <li>hibernate from December to April</li> </ul>	

**Snake - Adder**



Size	1
Amount of food eaten	2
Time hibernating	4
<ul style="list-style-type: none"> <li>eat small mammals such as mice and voles</li> <li>live in woodland and grassland</li> <li>hibernate from October to March</li> </ul>	

**Dormouse**



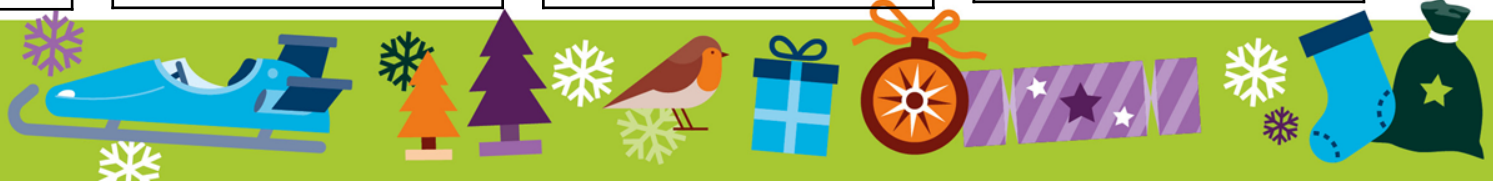
Size	1
Amount of food eaten	2
Time hibernating	4
<ul style="list-style-type: none"> <li>eat insects, flowers, fruit and nuts</li> <li>hibernate rolled up in a small ball on the ground in leaves</li> <li>hibernate from October to April</li> </ul>	

**Bear**



Size	4
Amount of food eaten	4
Time hibernating	4
<ul style="list-style-type: none"> <li>eat grass, roots, insects and berries</li> <li>hibernate in caves or digs a den</li> <li>hibernate from October to April</li> </ul>	

**Hibernation - Cards**





### Bumblebees



Size	0
Amount of food eaten	1
Time hibernating	4
<ul style="list-style-type: none"> <li>eat pollen and nectar</li> <li>hibernate in hives</li> <li>hibernate from December to March</li> </ul>	

### Ladybirds



Size	0
Amount of food eaten	1
Time hibernating	3
<ul style="list-style-type: none"> <li>eat insects, such as aphids</li> <li>live on plants and vegetation</li> <li>hibernate from November to April</li> </ul>	

### Moth



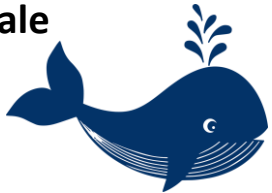
Size	0
Amount of food eaten	1
Time hibernating	3
<ul style="list-style-type: none"> <li>eat nectar and flowers</li> <li>hibernate as a caterpillar in vegetation</li> <li>hibernate from December to March</li> </ul>	

### Frog



Size	1
Amount of food eaten	2
Time hibernating	1
<ul style="list-style-type: none"> <li>eat insects, slugs and worms</li> <li>live in the mud in ponds during winter</li> <li>hibernates from February to March</li> </ul>	

### Whale



Size	5
Amount of food eaten	5
Time hibernating	0
<ul style="list-style-type: none"> <li>eat small plankton and krill</li> <li>live in the ocean</li> <li>do not hibernate</li> </ul>	

### Penguin



Size	2
Amount of food eaten	3
Time hibernating	0
<ul style="list-style-type: none"> <li>eat krill</li> <li>live on the ice in Antarctica</li> <li>do not hibernate</li> </ul>	

### Polar Bear



Size	4
Amount of food eaten	5
Time hibernating	0
<ul style="list-style-type: none"> <li>eat seals</li> <li>live on the ice in the Arctic</li> <li>do not hibernate</li> </ul>	

### Albatross



Size	3
Amount of food eaten	3
Time hibernating	0
<ul style="list-style-type: none"> <li>eat fish</li> <li>live on the coast in Antarctica</li> <li>do not hibernate</li> </ul>	

# Hibernation - Cards





**IET** The Institution of Engineering and Technology

**IET** The Institution of Engineering and Technology

**IET** The Institution of Engineering and Technology

**IET** The Institution of Engineering and Technology

**IET** The Institution of Engineering and Technology

**IET** The Institution of Engineering and Technology

**IET** The Institution of Engineering and Technology

**IET** The Institution of Engineering and Technology

# Hibernation - Cards

