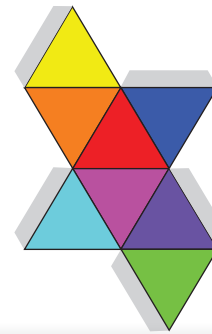
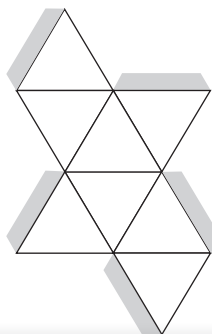
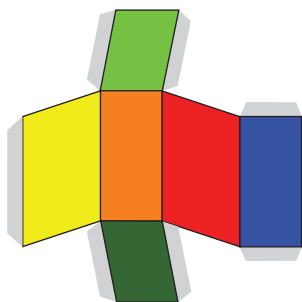
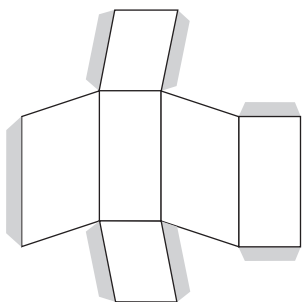


Crystals occur naturally, often as a result of **heat** and **pressure**.

They range from valuable diamonds to common salt crystals. Many crystals have **rotational symmetries**



Uncut diamond crystal



Beryl crystal



Fluorite crystal



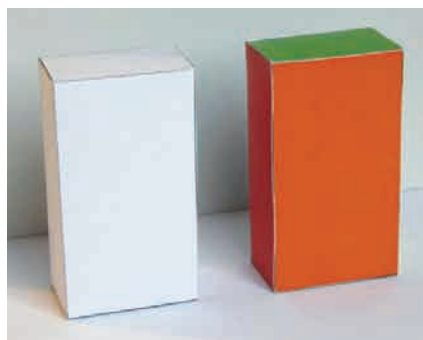
Salt crystal



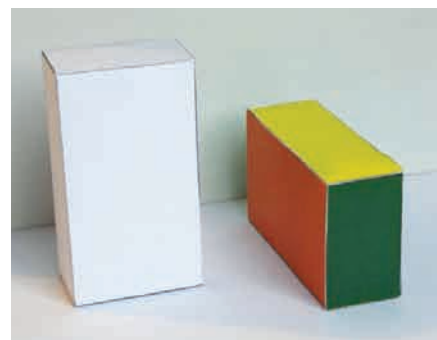
Pyrite crystal

Find the **different** ways each coloured model can be placed so that it lines up with the plain model...

like this...



but not like this...



Each placing corresponds to a rotational symmetry. For each symmetry find the axis of rotation.

Photos by Peter Smith Associates