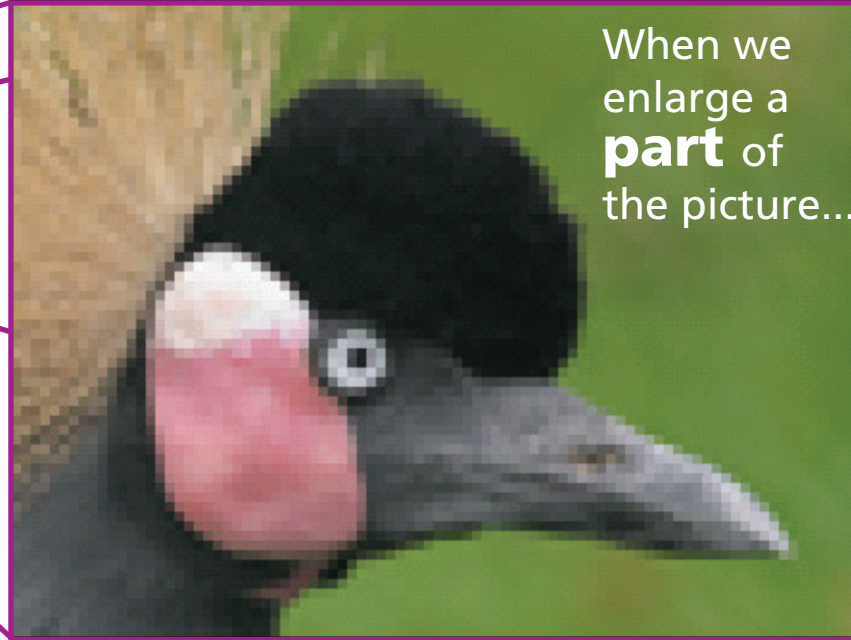
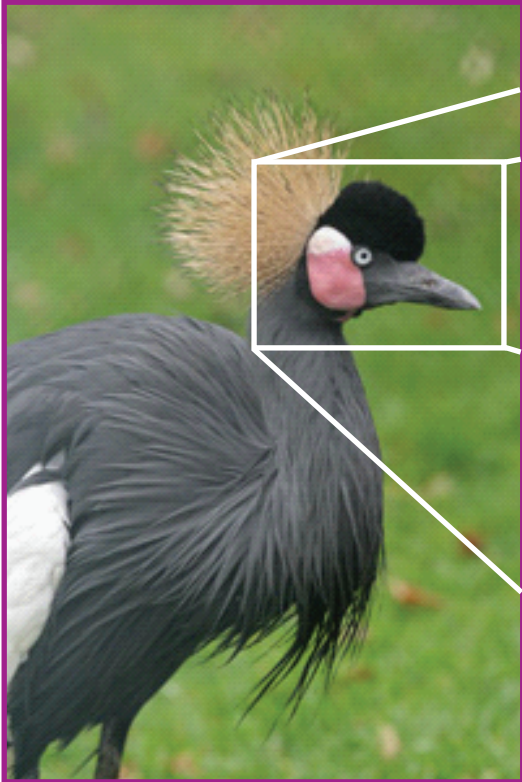


This picture is made up of **60,000 pixels**.

At this size, it looks **pretty good!**



When we enlarge a **part** of the picture...



...you see the individual pixels.

This effect is called **pixilation**.

Hold the picture up and move away from it.

When you get far enough away the pixilation seems to disappear!

Photo by Peter Smith Associates 2008

Getting a good television picture depends both on the **number of pixels on the screen** and the **distance you are from the screen**.

How far do you need to move from each of the pictures before the **pixilation disappears?**